

# CoRe

V1.1

- a. the central part of a celestial body (as the earth or sun) usually having different physical properties from the surrounding parts
- b. the place in a nuclear reactor where fission occurs
- c. a basic, essential, or enduring part (as of an individual, a class, or an entity)
- d. one of several processing units working in parallel in a computer

Cognitive Response

Federico Pelat  
Alexis Zacchi

In this leaflet, you will find

the concept and introduction to CoRe thesis

the beginnings of the installation

Research on data and the print media

Visual Inspirations



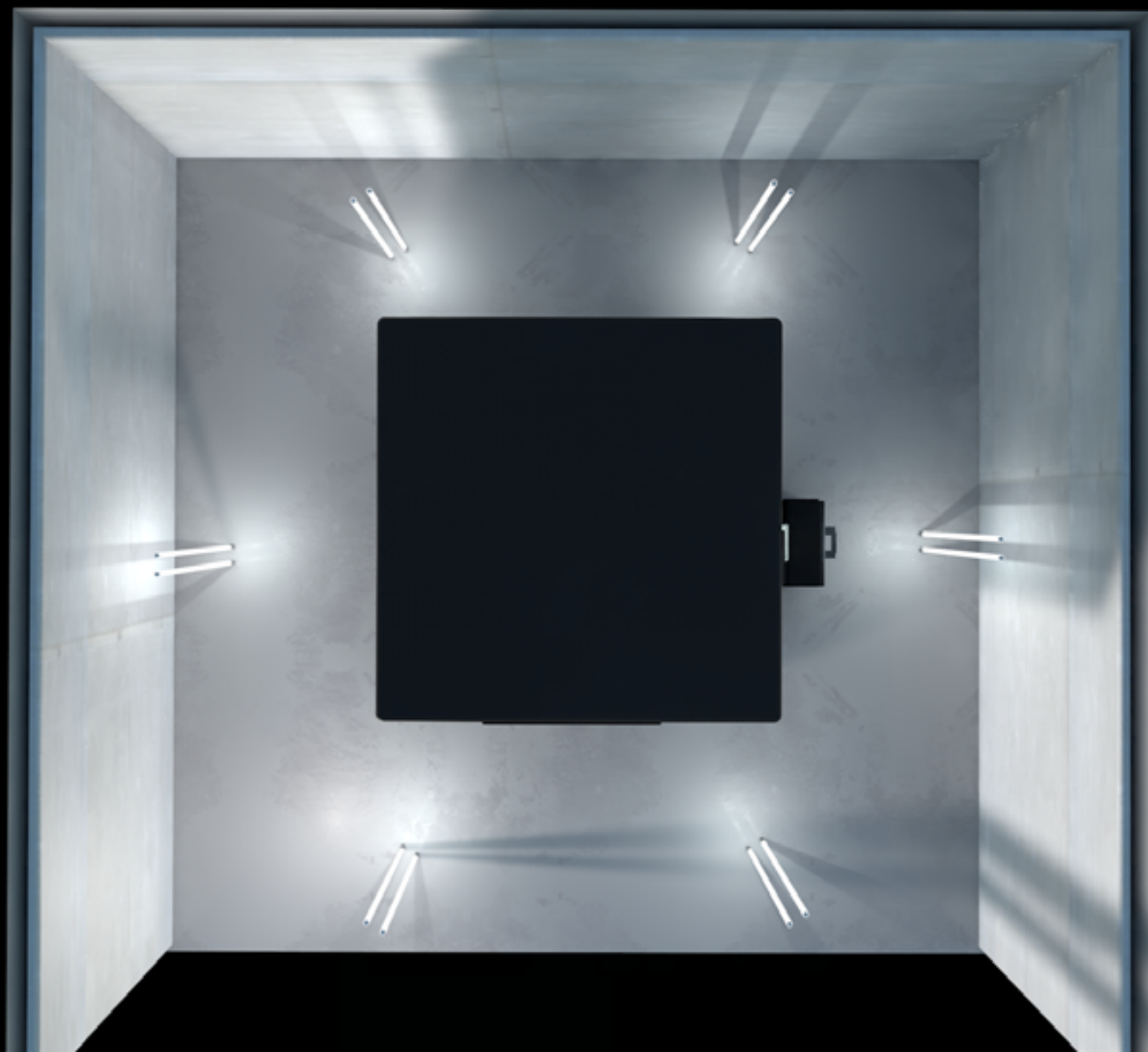


# Opportunities and limitations of the tools of Art Direction.

## Part #1 | Introduction

Reasoning about those themes requires reflections around distinct axis.

Suppose Art Direction as a function rather than a profession in order to associate it with the semantic field of Arts and not its financial aspect. *Arts* is here understood as an artistic production whatsoever, subsequent to a first theoretical then plastic reflection; the notion of production is essential, it provides material to be seen by an external public and visually materialise the idea of the artist. *Direction* links to the notion of team work. Tasks are distributed according to each others skills and qualifications, which leads to a common project when perfect cohesion is established. *Art Direction* is the result of the association and collaboration of various artists ( graphic designer, visual artist, composer, type-designer ... ), working under the guidance of an Art Director in order to accomplish a creation where every talent is put to best use.





The human body is a tool and, by definition, fallible. The Art Director has to create and lead through a tool he does not fully control. There are today several ways to observe and record this lack of influence over our own body. Science has often evolved with art and with, each discovery, created new forms of art. Wilhelm Röntgen discovered X-rays in 1895 and, from 2001, Wim Delvoye reinterpreted and worked the technique to create his X-rays series. Science is now on the verge of a new field of discovery. Upon stimulation of one of our five senses, our brain and more precisely, our neurons, activate each others and generate, beyond our control, connexions and associations leading to a response from our body.

Cerebral rhythm (or brainwaves) denotes an electromagnetic oscillation in a given frequency band resulting from coherent electrical activity of a large number of neurons in the brain. A blink of an eye, a feeling, an emotion become visible thanks to recent scientific advances.



## Part #2 | Set-up

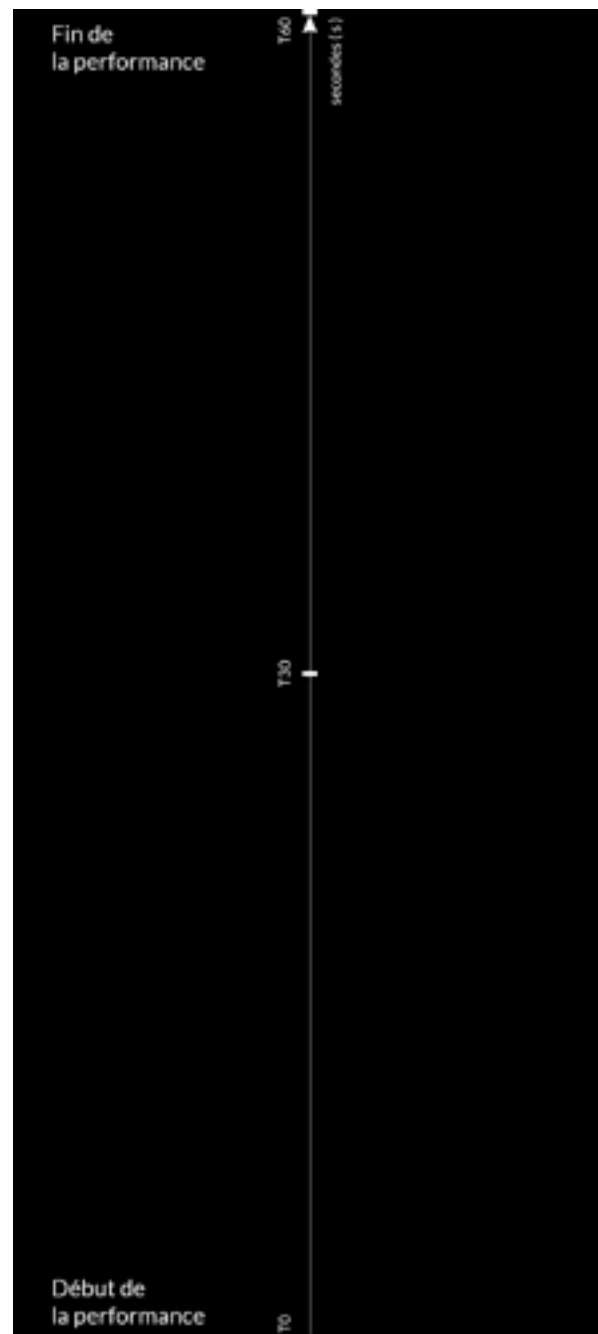
The Spectator enters the Cube.

He sets the brain-wave reader on his head; the performance begins. His emotional state initiates the soundtrack.

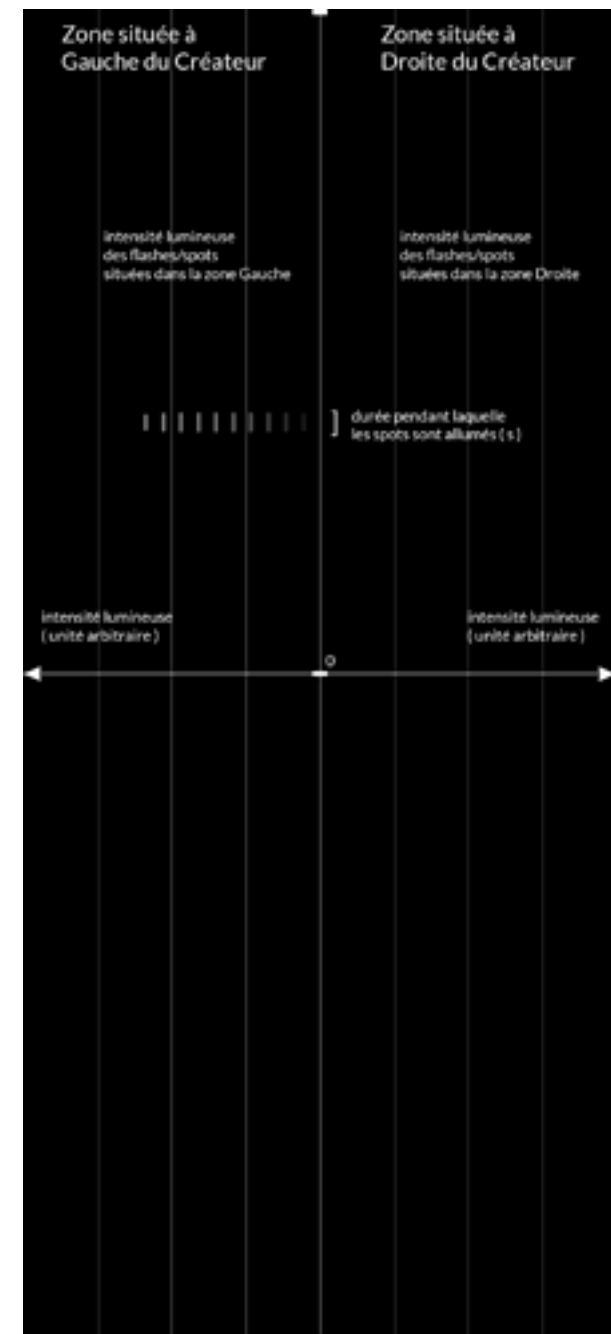
Anxiety, nervousness, impatience, pleasure, every emotion is transcribed into sound. A sound, short, long, vibrating, varying in frequency, amplitude and echo gives the tone.

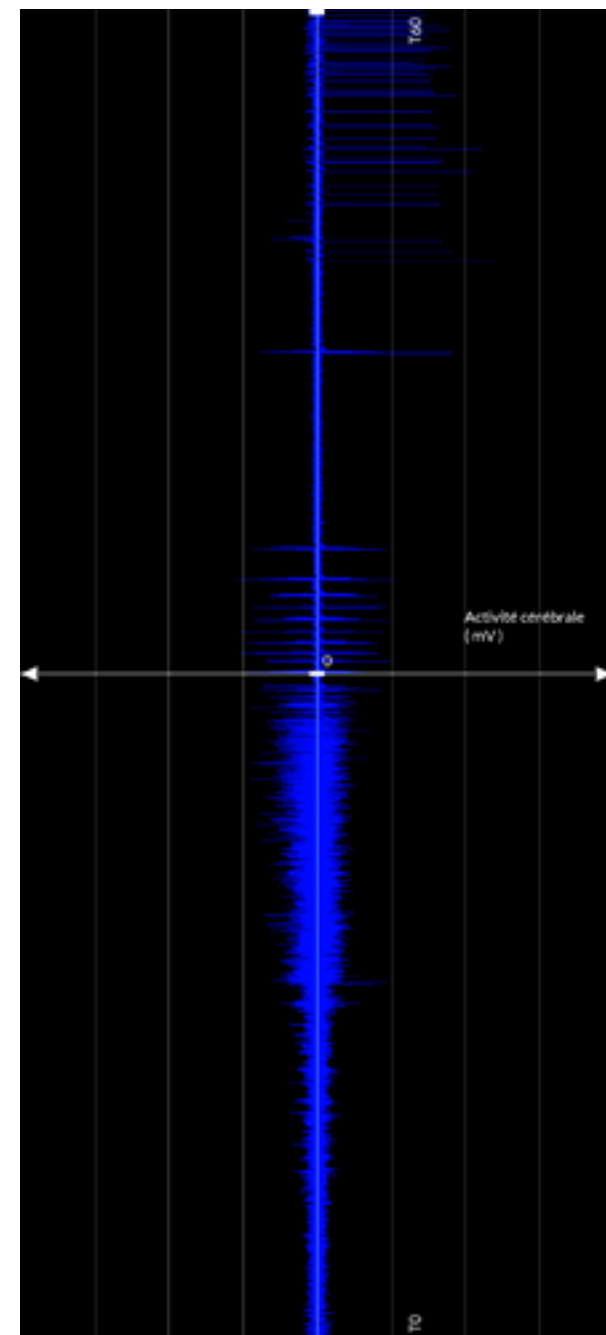
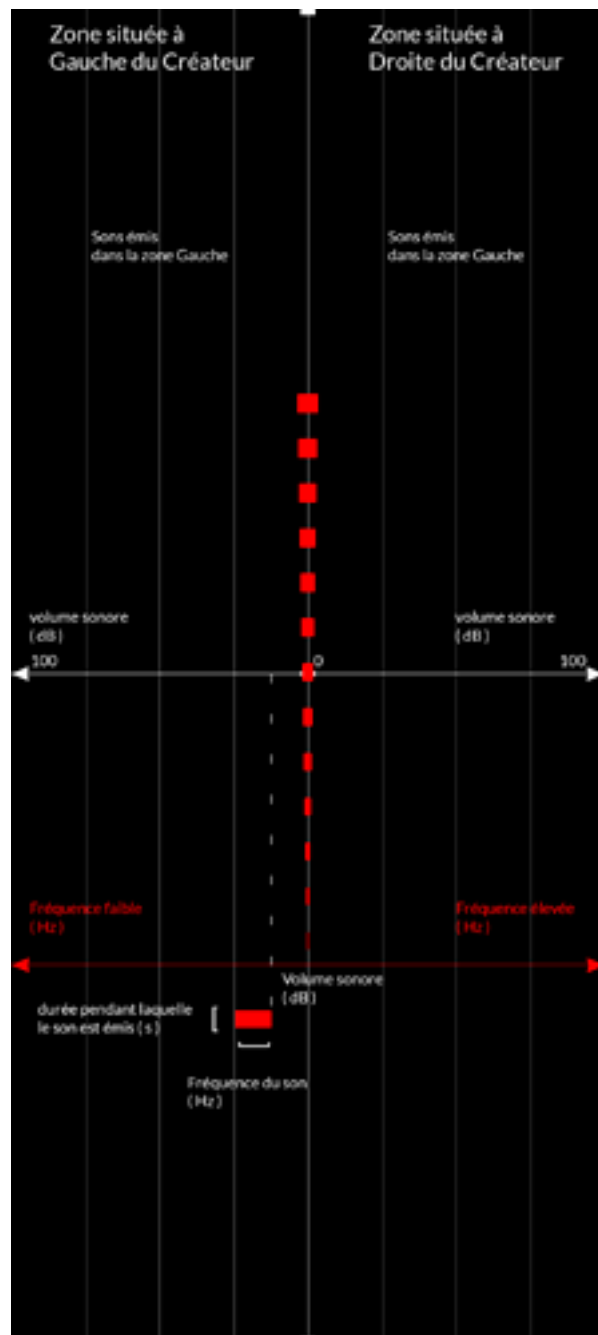
The brain reacts to this first auditory stimulus. This reaction is recorded by the electroencephalograph, interpreted by the software, and it triggers new events — flashes, darkness, dim light or a low bass, an echo, a shrill sound — that will make the brain react and so forth. Those data are stored and, associated with the performance of the Creator, transcribed on a screen and printed. Lights, sounds and brain waves are summarized on an encephalogram looking print.

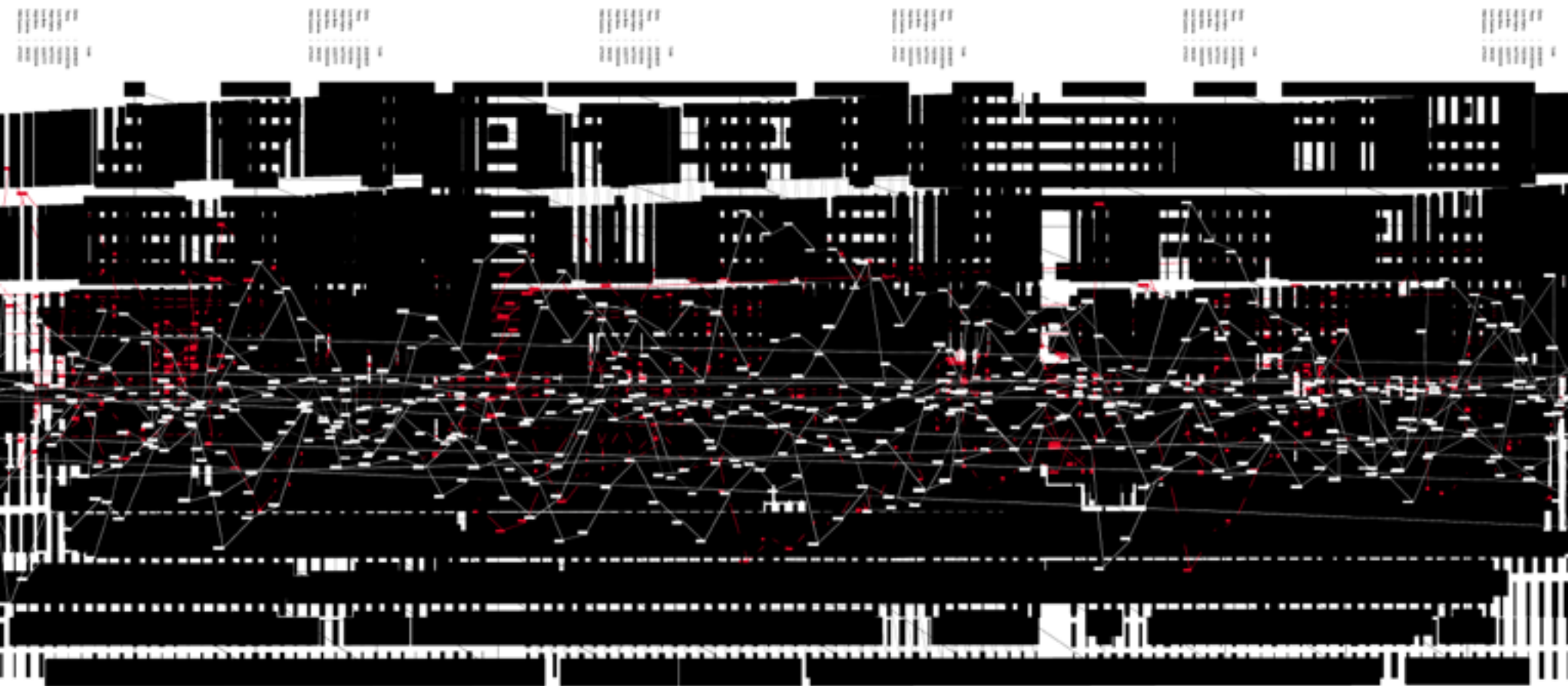
Only the Creator is the direct witness of what he is producing. The audience only see the result printed.



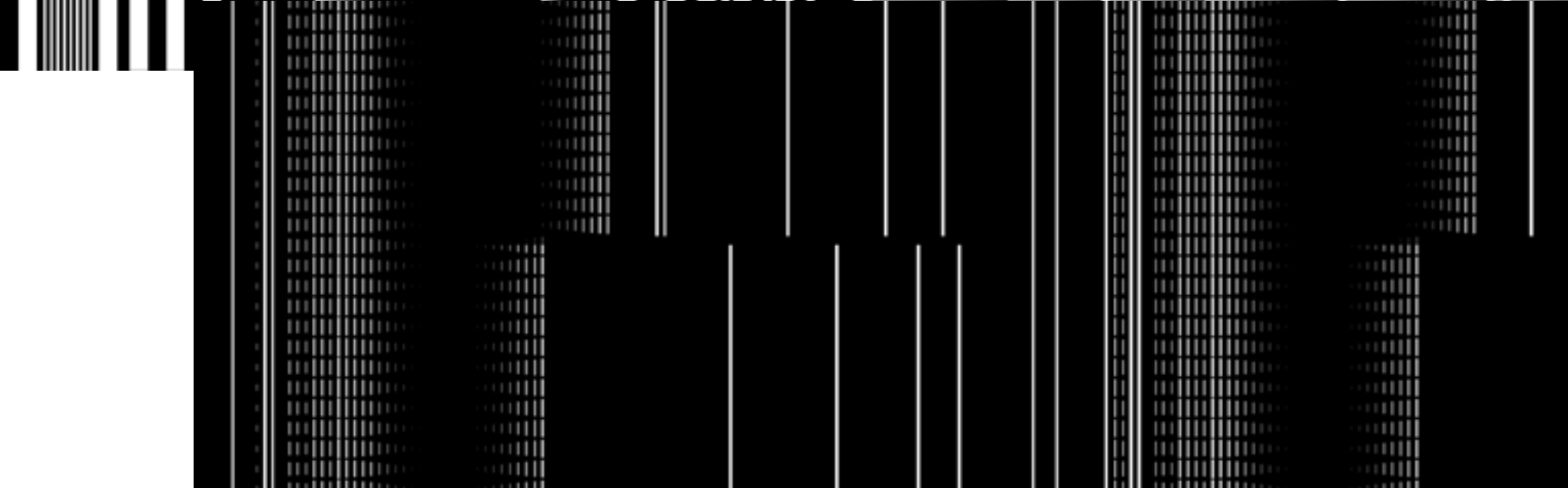
### Part #3 | Imagery

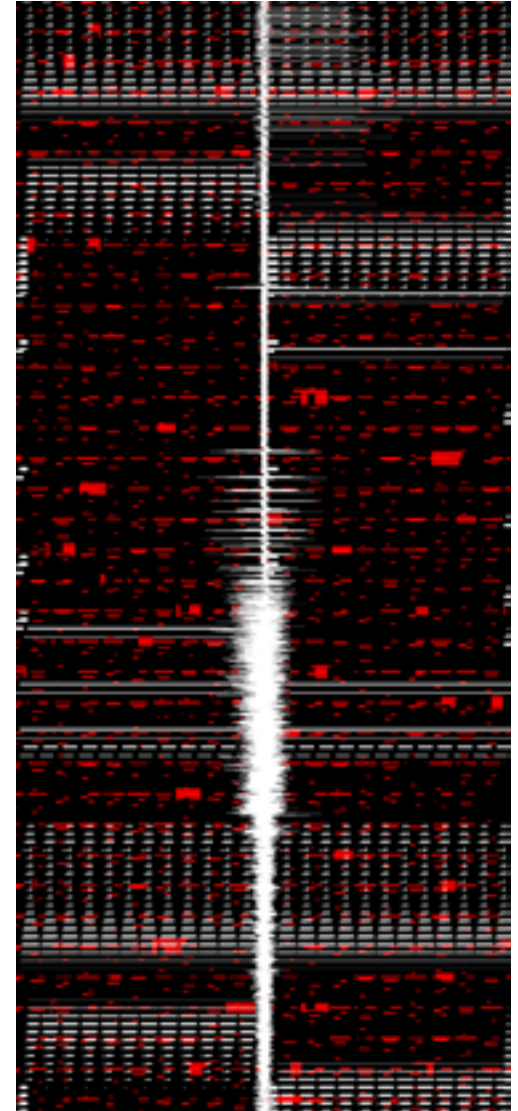


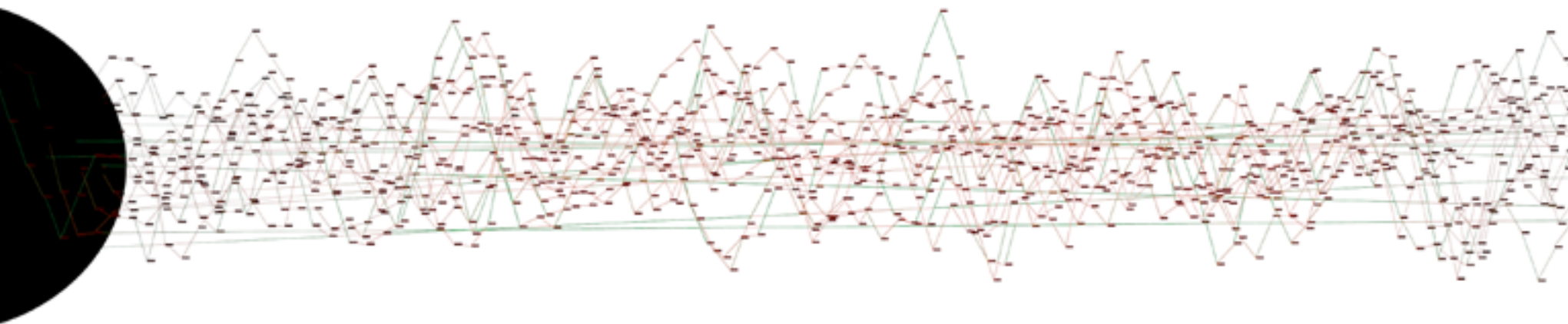


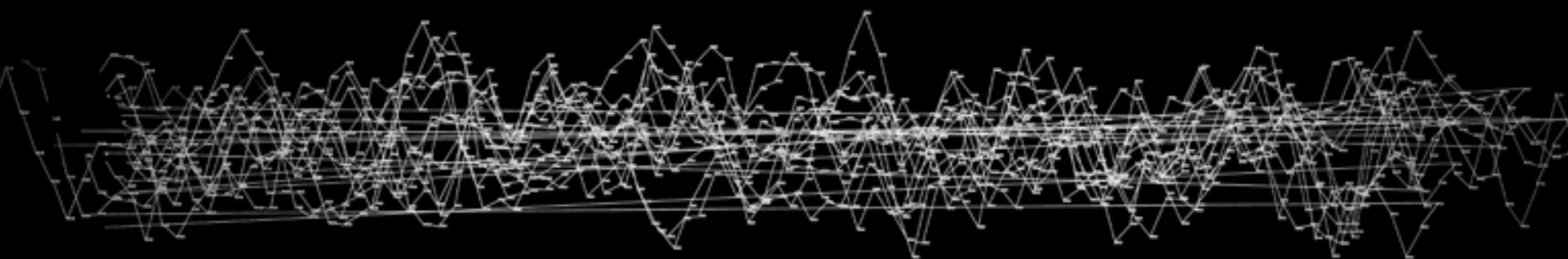




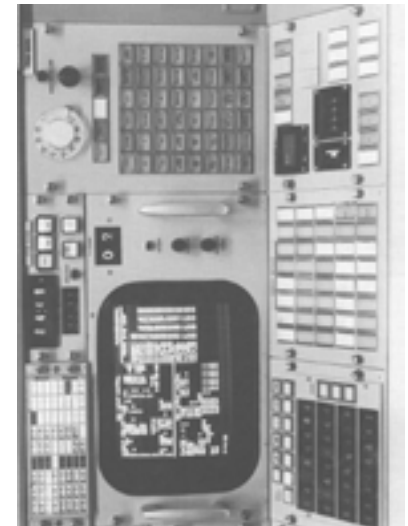
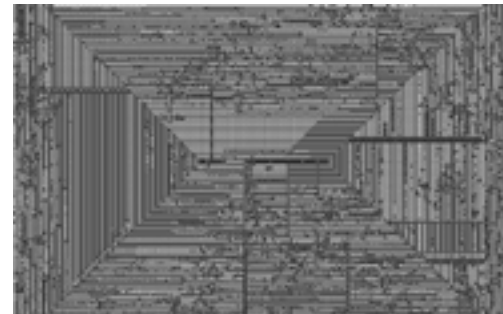
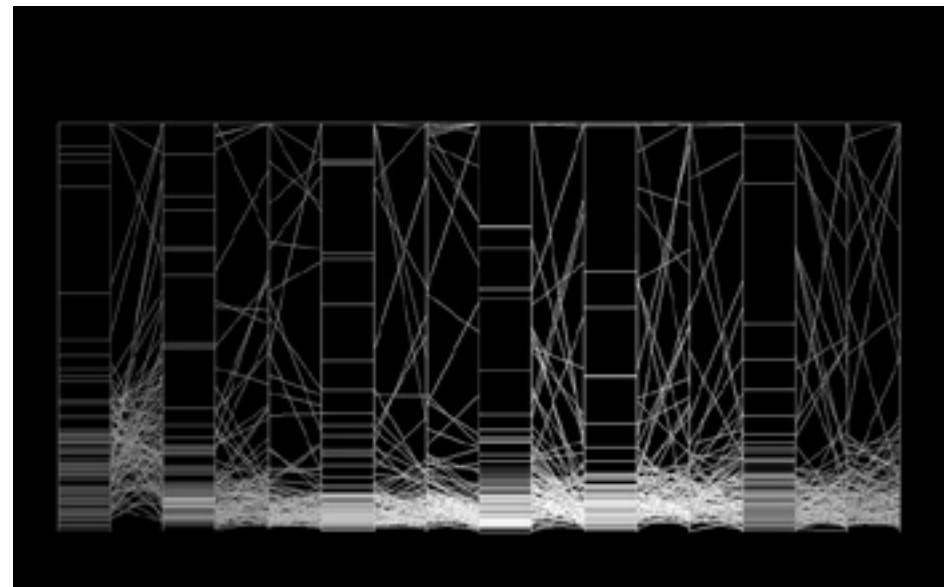
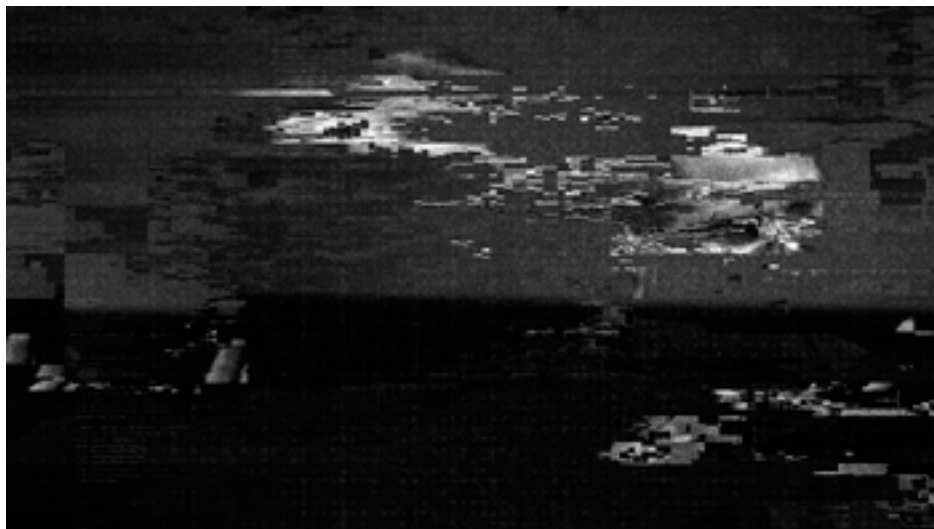


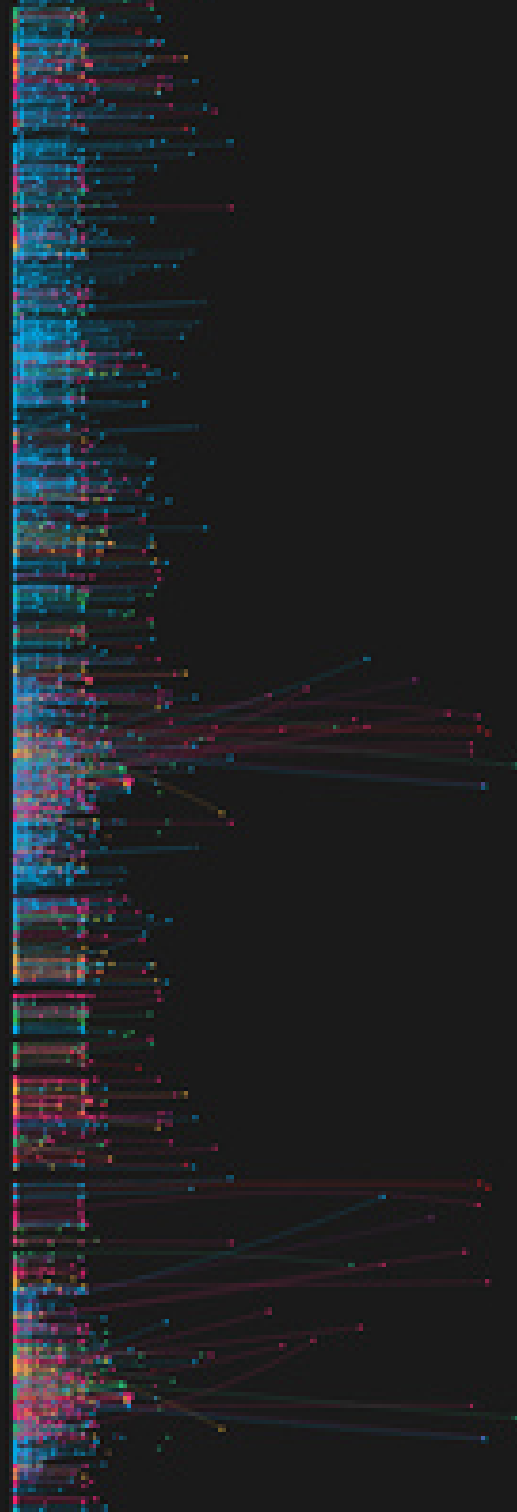












Windows を開始できませんでした。最近のハードウェアまたはソフトウェアの変更が原因の可能性があります。問題を修正するには次の方法があります：

1. Windows インストールディスクを挿入してコンピュータを再起動します
2. 言語の設定を選んでから、[次へ]をクリックします
3. コンピュータの修復をクリックします

ほかのオプション：

スタートアップ中に電源中断が起こった場合は、通常起動を選択してください。  
(方向キーを使って項目を選択してください。)

セーフ モード

セーフ モードとネットワーク

セーフ モードとコマンド プロンプト

前回正常起動時の構成 (詳細)

Windows を通常起動する

強調表示された選択が自動的に起動されるまでの秒数：

9

説明： Windows を通常起動します。



# Core

V.I.V

Cognitive Response

Federico Pelat  
Alexis Zaccchi

a. the central part of a celestial body (as the earth or sun) usually having different physical properties from the surrounding parts

b. the place in a nuclear reactor where fission occurs

c. a basic, essential, or enduring part (as of an individual, a class, or an entity)

d. one of several processing units working in parallel in a computer

In this leaflet, you will find

the concept and introduction to Core thesis

the beginnings of the installation

Research on data and the print media

Visual Inspirations



We are  
Maniacs.